

Comment Mark01-DU.ult

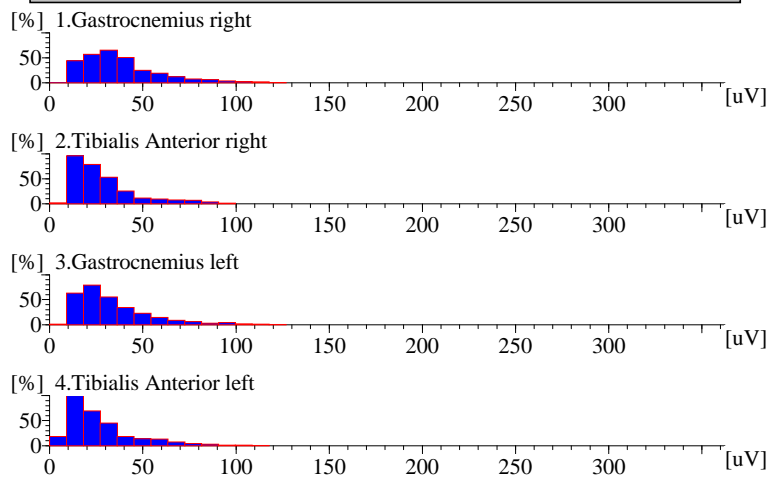
This is an example of an Ultraflex combined measurement of CDG, EMG and Gonio.

All three measurement components are synchronized automatically, and in the Ultraflex program you can use the (synchronized) time cursors to study the temporal relations of the various recordings.

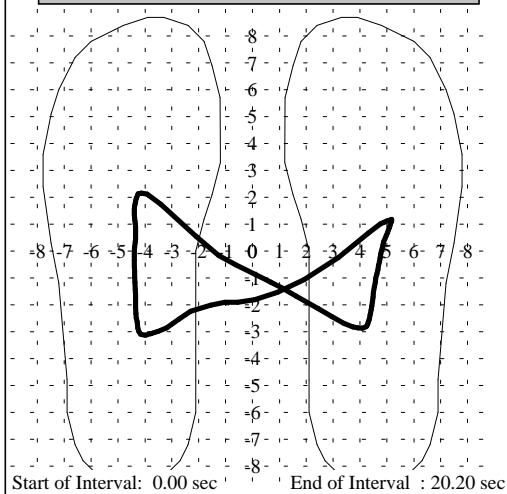
In the report generator you can define your own page layouts (optionally over multiple pages), and the program will apply this layout to all selected

You can register simultaneously the force distribution under the foot (CDG), 16 channels of EMG and 16 channels of joint angles (Gonio).

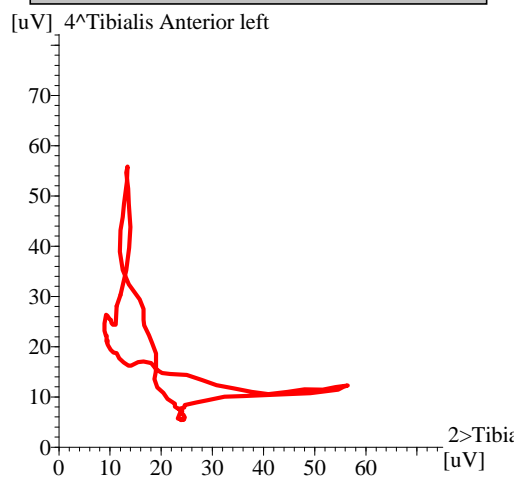
Emg Amplitude Histogram RMS Mark01-DU.ult



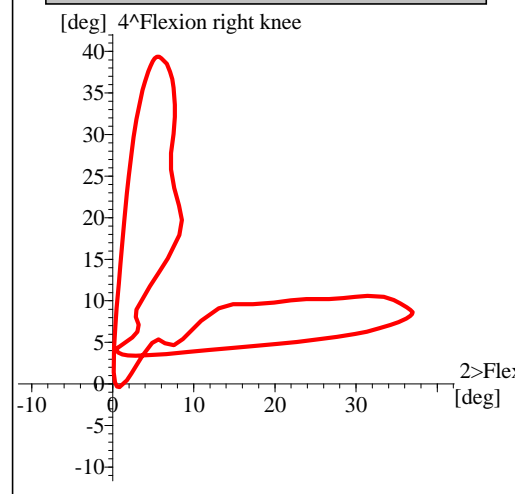
Cdg Cyclogram (Mean)



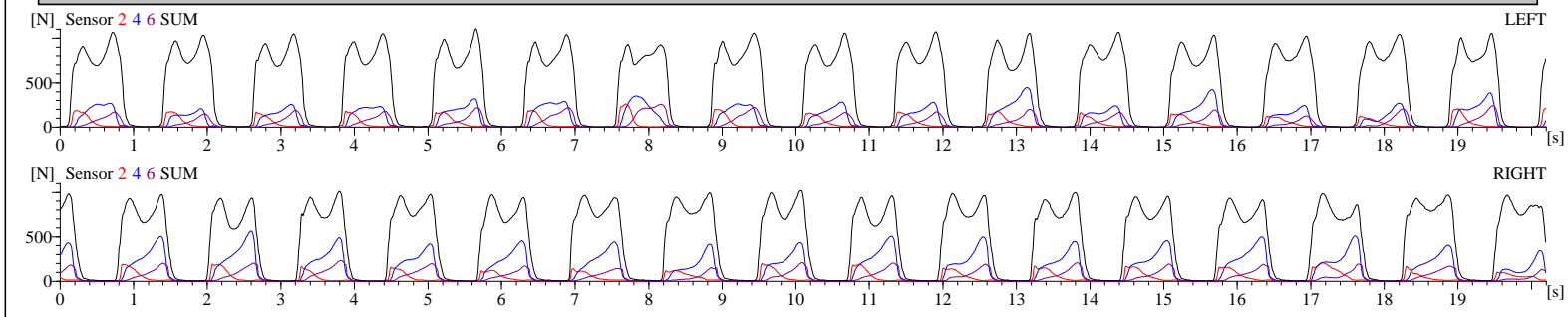
Emg Cyclogram (Mean)



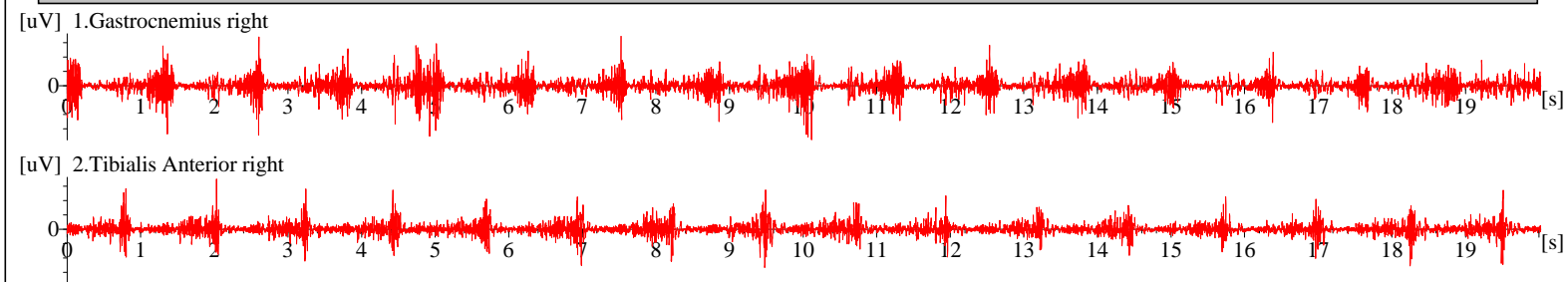
Gonio Cyclogram (Mean)



Cdg Forcegraphics



Emg Raw Data



Gonio Angle/Time

